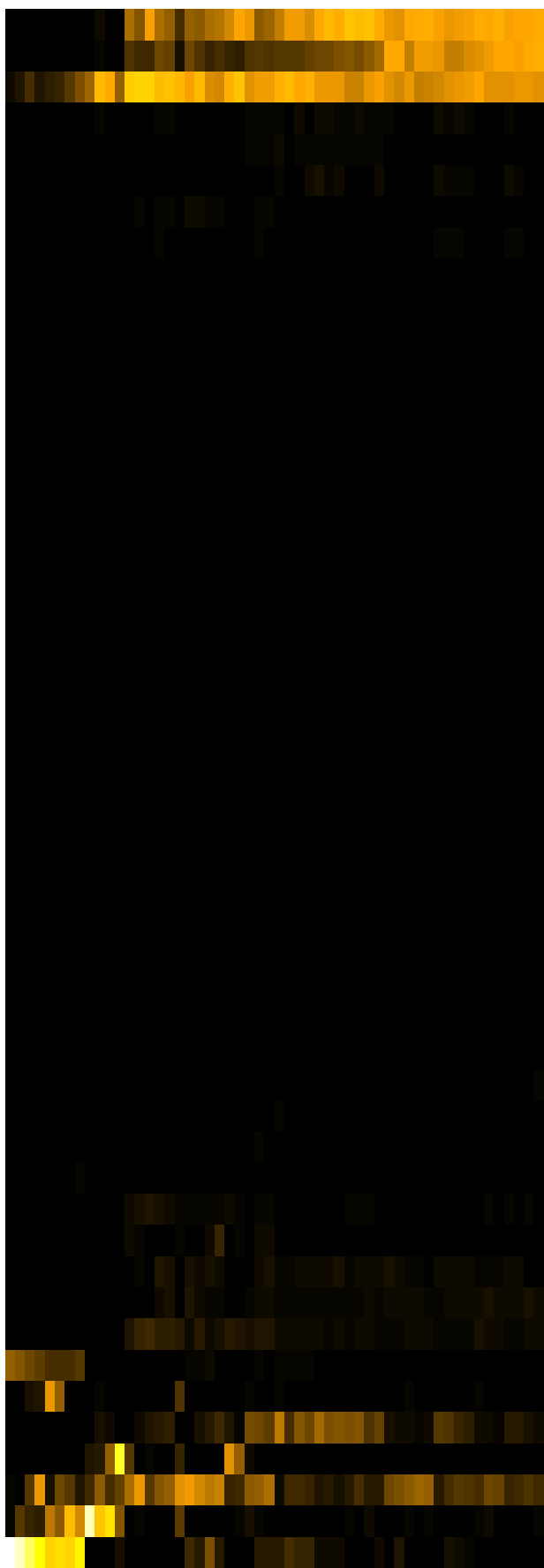
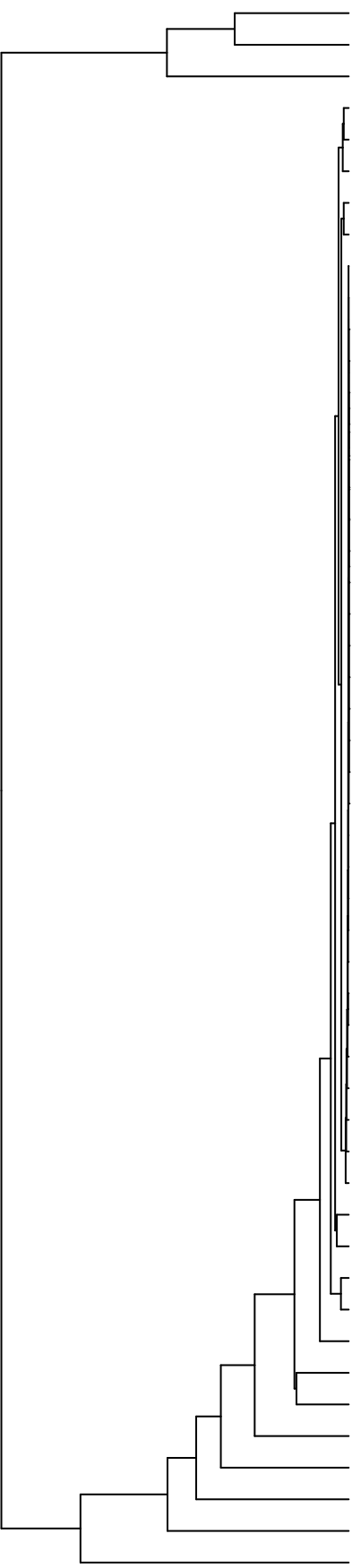


Group006
 I Final -PMA
 F Final -PMA



- Veillonella
- Haemophilus
- Streptococcus
- Campylobacter
- Leptotrichia
- Prevotella
- Gemella
- Porphyromonas
- Lancefieldella
- Saccharibacteria_(TM7)_[G-6]
- Cutibacterium
- Capnocytophaga
- Acidovorax
- Acinetobacter
- Lachnospiraceae_[G-2]
- Serratia
- Novosphingobium
- Leifsonia
- Agrobacterium
- Phyllobacterium
- Sphingobium
- Riemerella
- Absconditabacteria_(SR1)_[G-1]
- Microbacterium
- Siccationidurans
- Saccharibacteria_(TM7)_[G-5]
- Lautropia
- Saccharibacteria_(TM7)_[G-1]
- Oribacterium
- Alloprevotella
- Delftia
- Solobacterium
- Lachnoanaerobaculum
- Actinomyces
- Pseudomonas
- Catonella
- Stomatobaculum
- Staphylococcus
- Schaalia
- Rothia
- Aggregatibacter
- Eikenella
- Granulicatella
- Salmonella
- Raoultella
- Fusobacterium
- Enterobacter
- Neisseria
- Klebsiella
- Citrobacter

- F28914.S460
- F28914.S463
- F28914.S464
- F28914.S458
- F28914.S608
- F28914.S607
- F28914.S303
- F28914.S304
- F28914.S143
- F28914.S142
- F28914.S139
- F28914.S302
- F28914.S593
- F28914.S138
- F28914.S433
- F28914.S436
- F28914.S438
- F28914.S596
- F28914.S595
- F28914.S118
- F28914.S280
- F28914.S277
- F28914.S115
- F28914.S113
- F28914.S274
- F28914.S120
- F28914.S278

Samples

Genus